

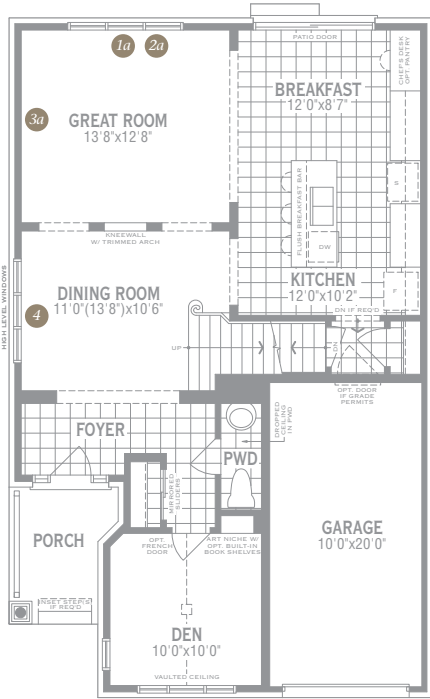
# THE Pine Hurst

1816 Sq.Ft.



34' WideLot™

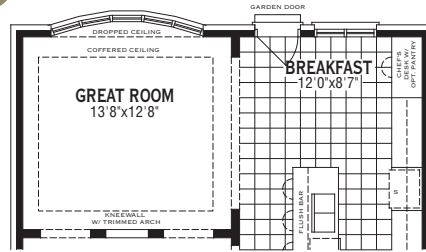
# Architect's Choice Options



Ground Floor Plan

## Bow Window w/Garden Door & Window In Lieu Of Patio Door

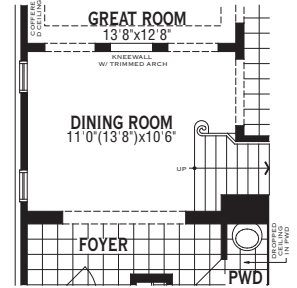
1a Ground Floor Plan



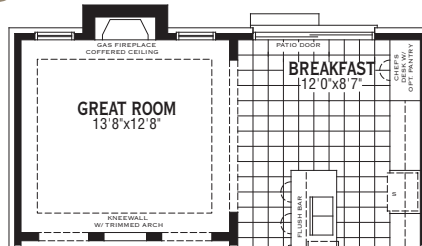
1b Basement Floor Plan



4 Split Windows In Dining Room



2a Ground Floor Plan

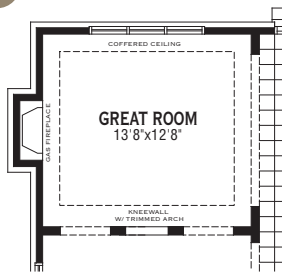


2b Basement Floor Plan

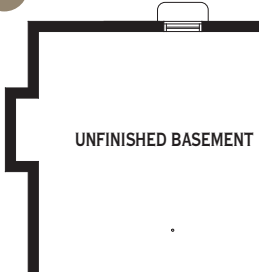


## Alternate Gas Fireplace Location

3a Ground Floor Plan

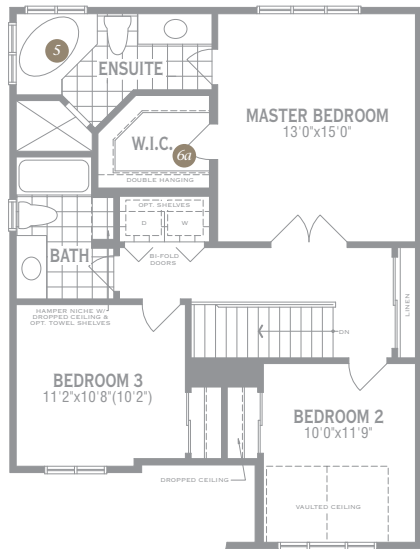


3b Basement Floor Plan



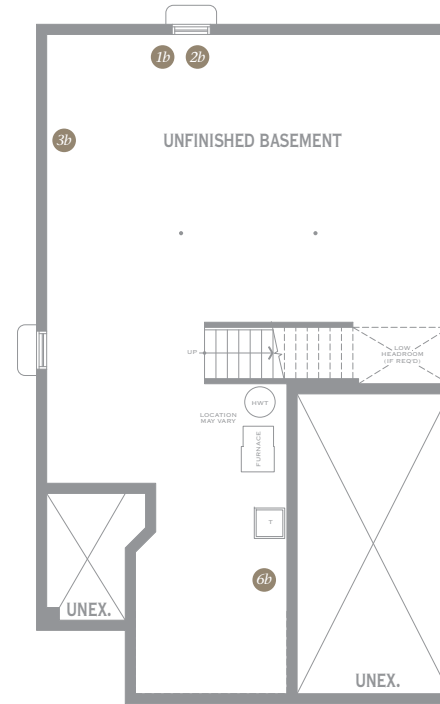
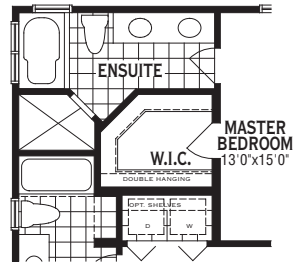
## Gas Fireplace In Great Room

## Architect's Choice Options



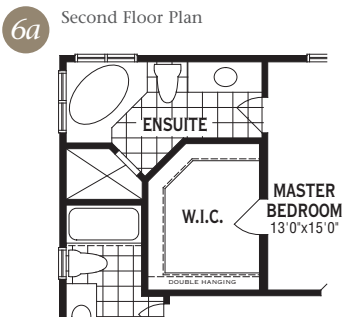
Second Floor Plan  
3 Bedroom

### 5 Alternate Ensuite w/Double Sink



Basement

### Larger W.I.C. w/Relocated Laundry To Basement



### Additional Architect's Choice Options Available for this Home:

#### Basement Choices

##### Cold Cellar

Includes:

- Partial area under the front porch specific to the elevation purchased
- Insulated door, overhead light, floor drain, and vent

##### Rec. Room Ready Package

Includes:

- Rough-in drains in predetermined location for future 3-pc bathroom

#### Ground Floor Choices

##### 9' Ceiling Package

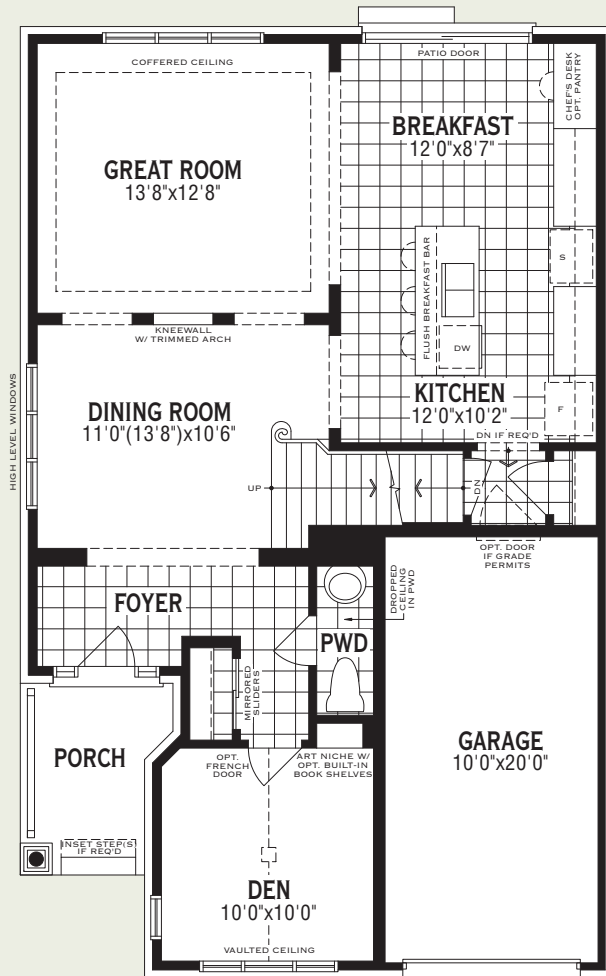
Includes:

- Approx. 12" higher ceilings
- Taller upper kitchen cabinets
- Taller Ground Floor windows and patio sliding doors (where applicable)
- Transom over front and Garden Doors (where applicable)
- Approx. 8'0" high interior doors and arches (where applicable)
- Stair reconfiguration and/or minor design changes may be required to accommodate

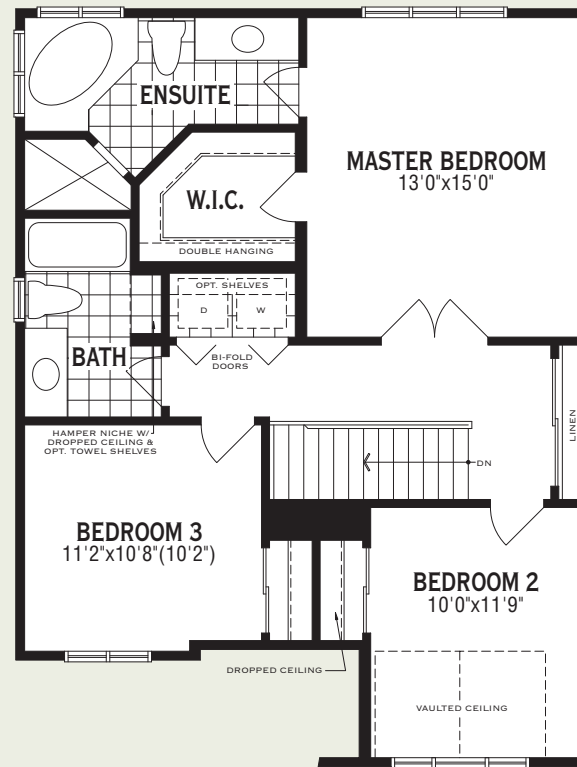
Your Design Consultant will be more than happy to further explain these options to you at your Design Centre Appointment.

All Architect's Choice Options are purchased through the Design Centre at your Design Centre Appointment.

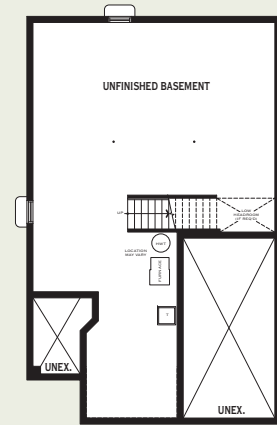
HE3405  
The Pine Hurst  
1816 Sq.Ft.



Ground Floor Plan



Second Floor Plan  
3 Bedroom



Basement



34' WideLot™  
HE3405  
The Pine Hurst  
1816 Sq.Ft.

All illustrations are artist's concept. Specifications, terms and conditions are subject to change without notice. These floor plans and room dimensions apply to elevation 'A' of this model type. Note that plans and room dimensions may vary according to elevation. Plan may be built as the mirror image. "Quiet wall" (where Shown) means a wall in which additional insulation has been installed. This will assist in reducing, but not eliminating, ambient sound from adjoining rooms and mechanical systems. The extent of the reduction will vary depending upon various factors including, without limitation, the presence and extent of mechanical systems located in the wall. Please consult your sales representative. E.&O.E. May 2008. Copyright 2008 – Mattamy Homes Limited. Reprint October 2008.