

Plan 4

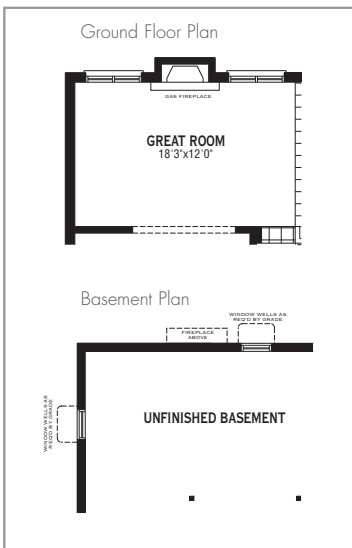
SP3474

1835 SQ.FT.

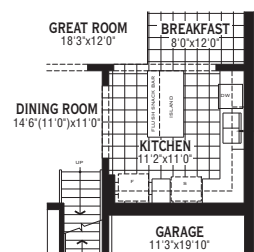


"Architect's Choice" Options Ground Floor Options

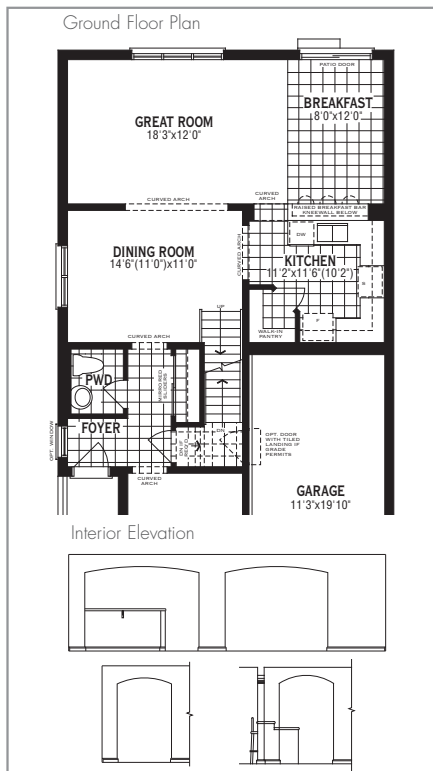
1 Gas Fireplace In Great Room



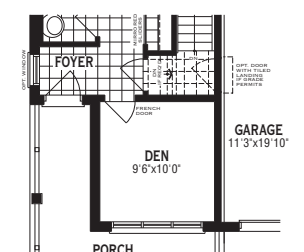
2 Chef's Kitchen



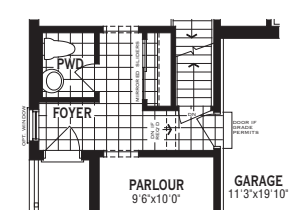
3 Curved Arch Package

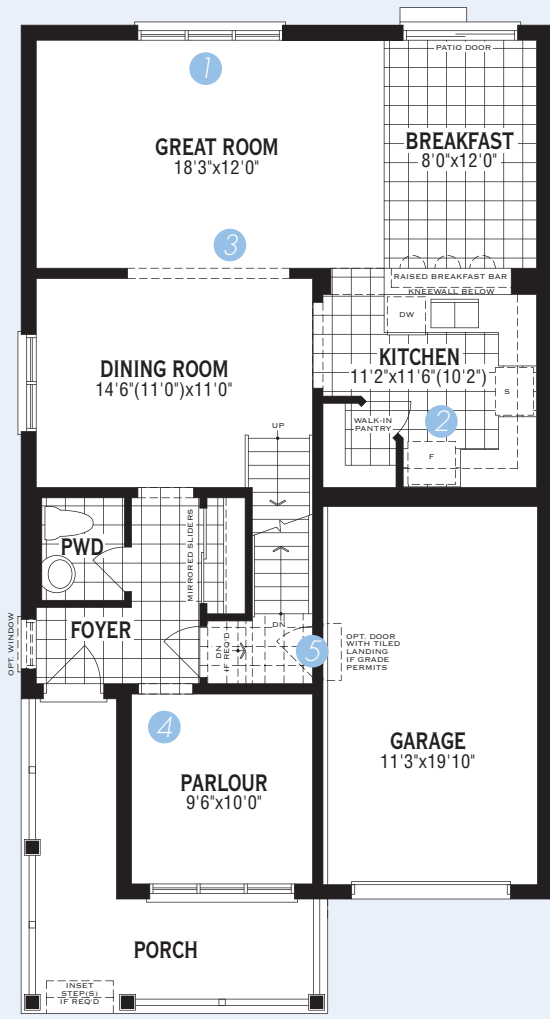


4 Den In Lieu Of Parlour

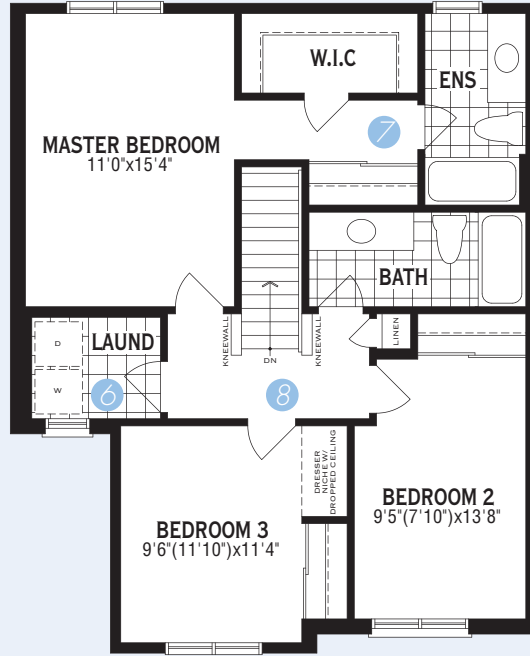


5 Finished Door To Garage

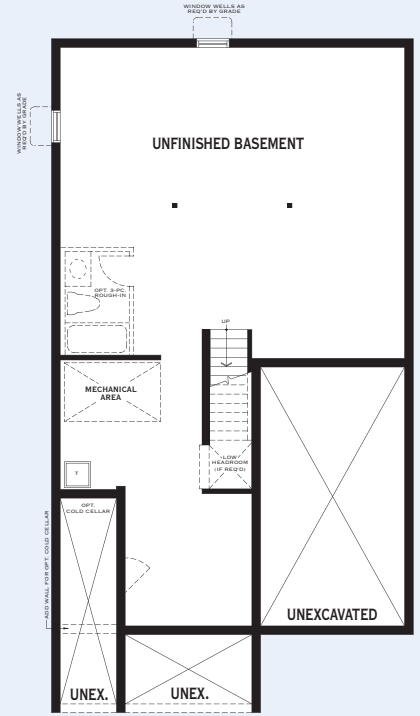




Ground Floor Plan



Second Floor Plan



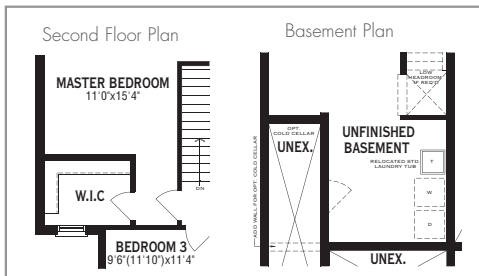
Basement



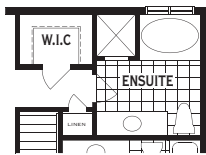
"Architect's Choice" Options

Second Floor Options

6 Additional W.I.C. In Master Bedroom w/ Laundry Relocated To Basement



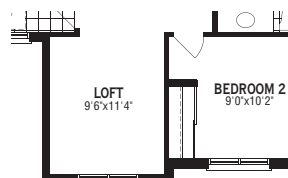
7 Bath Oasis



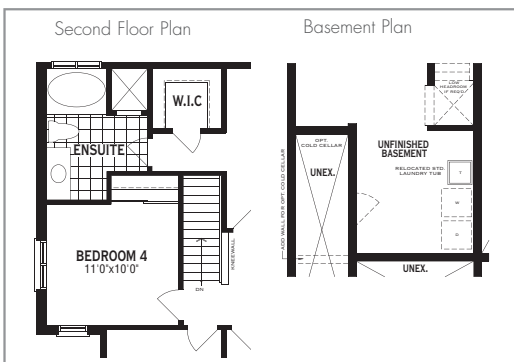
8 4 Bedroom Plan



10 Loft In Lieu Of Bedroom 3 (Available w/Option 8 Only)



9 4 Bedroom Plan & Bath Oasis w/ Laundry Relocated To Basement (Available w/Option 8 Only)



Additional Architect's Choice Options Available for this Home:

Ground Floor Choices

2' Ceiling Package

- Includes:
- Approx. 12" higher ceilings
- Taller upper kitchen cabinets
- Taller Ground Floor windows and patio sliding doors (where applicable)
- Transom over front and Garden Doors (where applicable)
- Approx. 8'0" high interior arches and doors (where applicable)
- Stair configuration and/or minor design changes may be required to accommodate

Basement Choices

Cold Cellar

- Includes:
- Partial area under the front porch specific to the elevation purchased
- Insulated door, overhead light, floor drain and vent

3-Piece Rough-In

- Includes:
- Rough-in drains in predetermined location for future 3-piece bathroom

SP3474

All illustrations are artist's concept. Specifications, terms and conditions are subject to change without notice. These floor plans and room dimensions apply to elevation 'C' of this model type. Note that plans and room dimensions may vary according to elevation. Plan may be built as the mirror image. "Quiet wall" (where shown) means a wall in which additional insulation has been installed. This will assist in reducing, but not eliminating, ambient sound from adjoining rooms and mechanical systems. The extent of the reduction will vary depending upon various factors including, without limitation, the presence and extent of mechanical systems located in the wall. Please consult your sales representative. E.&O.E. August 2010 - Copyright 2010 - Mattamy Homes Limited. Reprint August 2011.